



The Inn at Dromoland offers a fantastic solution for your next Company Meeting / Conference. The benefit of booking with us is that you will have your delegate's undivided attention. We are located on 450 acres of Parkland, with ample complimentary car parking, and easy access just off Exit 11 on the M18 Limerick to Galway road.

Our aim is to ensure that you and your delegates get to experience the highest level of service, along with exceptional facilities, to ensure that you have an event that will be the talk of your company for years to come!

Our Conference and Meeting rooms all offer natural daylight, WiFi access, a wide variety of styles and configurations. The Ballyhannon Suite is our main conference room and can accommodate up to 220 Classroom Style, while our Castlefergus Suite, Sun Lounge, Patio Room and Boardroom offer the ideal break out rooms.

With its close proximity to both Shannon International Airport, Limerick & Galway City, The Inn at Dromoland is the perfect place to do business in the Shannon region.

*Your Perfect Meetings and Events Venue*



## *Menu Pricing*

### **Refreshment Options**

Tea / Coffee Breaks – from €2.50 per person

### **Lunch Options**

Working Light Lunch – from **€12.00** per person

Board Meeting Plated Lunch – from €13 per person (Main Course only)

2 Course Buffet Lunch – from **€20.00** per person

### **Dinner Options**

3 Course Dinner – from **€28.00** per person

Buffet Dinner – from **€25.00** per person

BBQ Menu – from **€17.50** per person

Gala Dinner Menu's – from **€35.00** per person

***Sample Menu's are available on request***



### *Conference Options*

#### ***Ballyhannon Suite***

*Length 97'*

*Width 38'*

*Height 14'*

*Classroom 220*

*Theatre 350*

*Dining 280*

*U Shape 80*

*Boardroom 80*



#### ***The Sun Lounge***

*Length 44'*

*Width 24'*

*Height 10'*

*Classroom 30*

*Theatre 50*

*Dining 45*

*U Shape 25*

*Boardroom 25*



*Your Perfect Meetings and Events Venue*



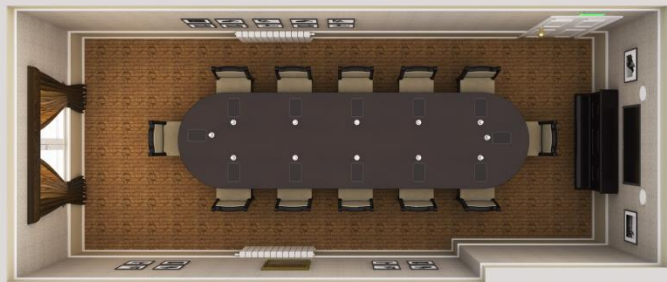
### **Castlefergus**

*Length 40'*  
*Width 39'*  
*Height 9'*  
*Classroom 60*  
*Theatre 120*  
*Dining 80*  
*U Shape 30*  
*Boardroom 40*



### **Boardroom**

*Length 26'*  
*Width 13'*  
*Height 12'*  
*Boardroom 12*



*Your Perfect Meetings and Events Venue*



***Dining Options / Exhibition Space***

***The Patio Room***

*Length 40'*  
*Width 39'*  
*Height 9'*  
*Classroom 60*  
*Theatre 120*  
*Dining 80*  
*U Shape 30*  
*Boardroom 40*



***Deerfields Restaurant***

*Length 52'*  
*Width 40'*  
*Height 10'*  
*Dining 102*

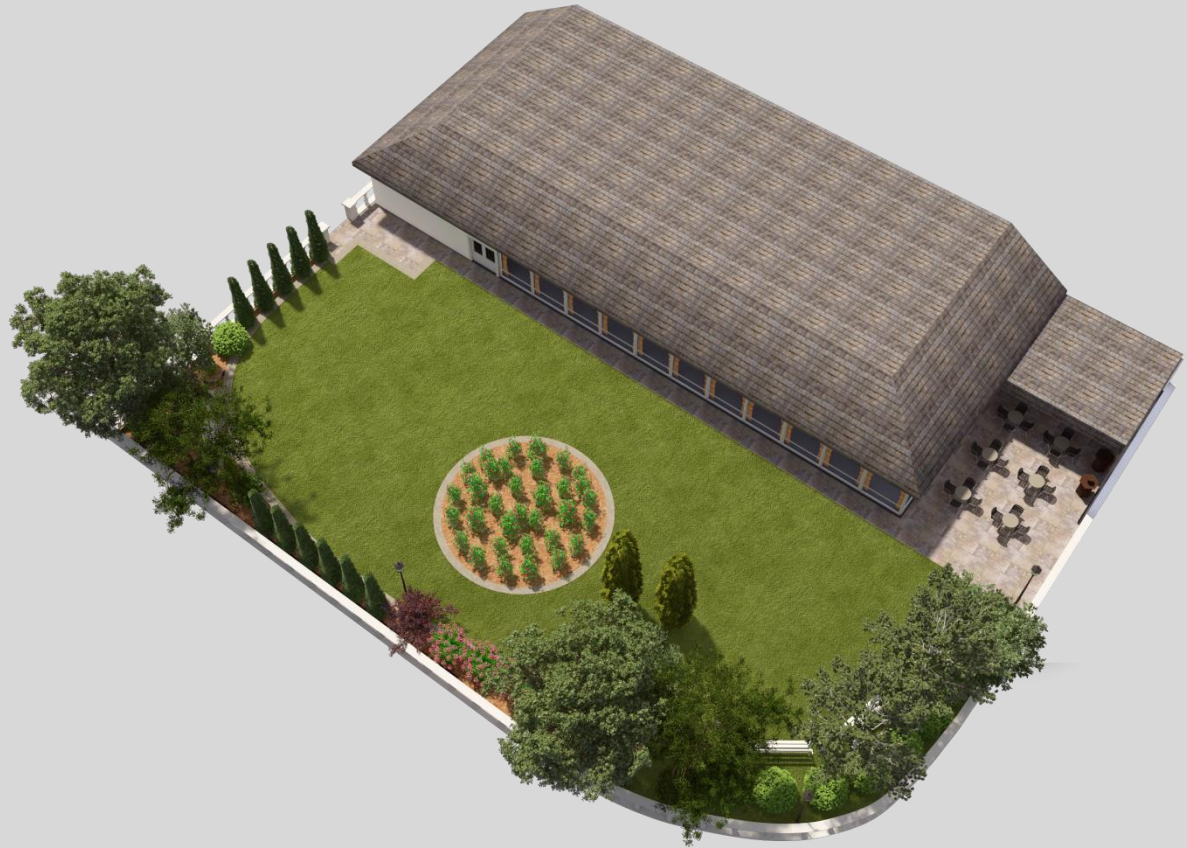


*Your Perfect Meetings and Events Venue*





*Your Outdoor Space for Team Building / Al Fresco*



***Whatever your requirements, we have the space to suit.***

***Contact us today for a tailor made quote.***

Tom Shanahan  
Sales Manager  
The Inn at Dromoland



061 700 127 / 087 6529083



[tom.shanahan@theinnatdromoland.ie](mailto:tom.shanahan@theinnatdromoland.ie)



[www.theinnatdromoland.ie](http://www.theinnatdromoland.ie)

*Your Perfect Meetings and Events Venue*